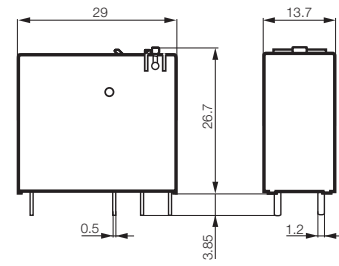


# Relay couplers - RIDERSERIES

## RCI relay 1 CO contact AC/DC coil

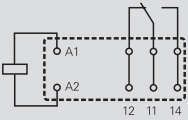
- 4000 VA breaking capacity
- Sturdy plug-in connection
- Optional test button with lock function and window
- Optional status indicator
- Optional suppressor



### Circuit diagram

View of connections  
Dimensions in mm

1 C/O changeover contact



### Output

max. switching voltage AC	250 V
Continuous current	16 A
Contact base material	AgNi 90/10
Mechanical endurance	AC coil 5x10 <sup>6</sup> / DC coil 10x10 <sup>6</sup> switching operations
Response time / Drop-out time	7 ms / 3 ms

### Rated data

Status indicator / Free wheel diode	see ordering data
Operating temperature	-40 °C...+70 °C
UL 94 flammability rating	V-0
Approvals	cURus; VDE; CE;

### Insulation coordination (IEC 60664)

Rated voltage	250 V
Creepage and clearance path input - output	8 mm
Overtoltage category	III
Pollution severity	3
Protective separation to VDE 0106 part 101	yes

### Dimensions

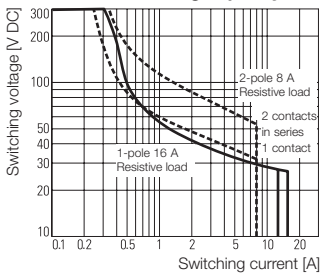
Length x width x height	mm	29 / 13.7 / x
-------------------------	----	---------------

### Note

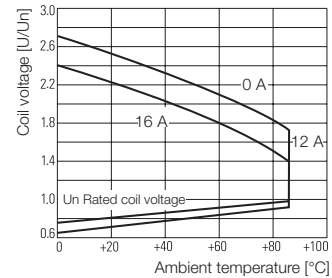
		x = 25.5 without test button / 26.7 with test button
--	--	--

## Applications

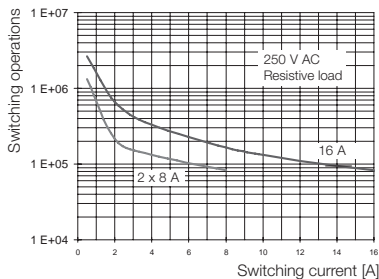
### DC load breaking capacity



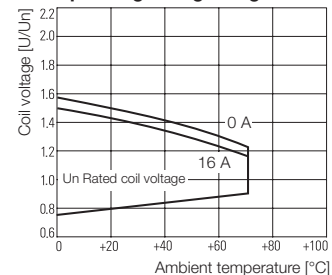
### Operating voltage range DC



### Electrical endurance



### Operating voltage range DC



**RCI relay**  
**1 CO contact AC/DC coil**

Type code

RCI				
-----	--	--	--	--

Type RIDER Control Industrial

Type of construction  
 3 1-pole, 16 A  
 4 2-pole, 8 A

Type of contact  
 1 1 CO contact without test button  
 2 2 CO contacts without test button  
 7 1 CO contact with test button  
 8 2 CO contacts with test button

Contact material  
 4 AgNi 90/10

Coil	
012	12 V DC
024	24 V DC
048	48 V DC
110	110 V DC
524	24 V AC
615	115 V AC
730	230 V AC
AB2	12 V DC+LED+diode
AC4	24 V DC+LED+diode
AE8	48 V DC+LED+diode
BB0	110 V DC+LED+diode
R24	24 V AC+LED
S15	115 V AC+LED
T30	230 V AC+LED

**Ordering data**

Input	12 V DC 1CO	24 V DC 1CO	48 V DC 1CO	110 V DC 1CO
Rated voltage	12 V DC	24 V DC	48 V DC	110 V DC
DC Response/dropout Volt	8,4 V / 1,2 V	16,8 V / 2,4 V	33,6 V / 4,8 V	77 V / 11 V
Power rating	400 mW	400 mW	400 mW	400 mW
Rated current DC	33,3 mA	16,7 mA	8,7 mA	4,1 mA
Coil resistance	360 Ω ±10%	1440 Ω ±10%	5620 Ω ±10%	26600 Ω ±12%

**Ordering data**  
**Relais**

	12 V DC 1CO	24 V DC 1CO	48 V DC 1CO	110 V DC 1CO
Standard Type	RCI314012	RCI314024	RCI314048	RCI314110
Order No.	<b>8869800000</b>	<b>8869810000</b>	<b>8869820000</b>	<b>8869830000</b>
with test button Type	RCI374012	RCI374024	RCI374048	RCI374110
Order No.	<b>8869950000</b>	<b>8869960000</b>	<b>8869970000</b>	<b>8869980000</b>
with LED + protective diode* Type	RCI314AB2	RCI314AC4	RCI314AE8	RCI314BB0
Order No.	<b>8870090000</b>	<b>8870100000</b>	<b>8870110000</b>	<b>8870120000</b>
with test button + LED Type	RCI374AB2	RCI374AC4	RCI374AE8	RCI374BB0
+ protective diode* Order No.	<b>8870240000</b>	<b>8870250000</b>	<b>8870260000</b>	<b>8870270000</b>

**Note**  
\*Protective diode only with DC input

**Ordering data**

Input	24 V AC 1CO	115 V AC 1CO	230 V AC 1CO
Rated voltage	24 V AC	115 V AC	230 V AC
AC Response/dropout Volt	18 V / 3,6 V	86,3 V / 17,3 V	172,5 V / 34,5 V
Power rating	0,75 VA	0,75 VA	0,75 VA
Rated current AC	31,6 mA	6,6 mA	3,2 mA
Coil resistance	350 Ω ±10%	8100 Ω ±15%	32500 Ω ±15%

**Ordering data**  
**Relais**

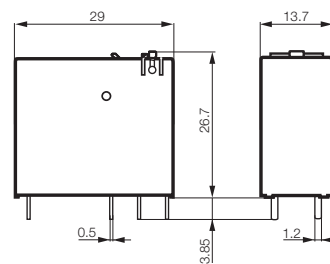
	24 V AC 1CO	115 V AC 1CO	230 V AC 1CO
Standard Type	RCI314524	RCI314615	RCI314730
Order No.	<b>8869840000</b>	<b>8869850000</b>	<b>8869860000</b>
with test button Type	RCI374524	RCI374615	RCI374730
Order No.	<b>8869990000</b>	<b>8870000000</b>	<b>8870010000</b>
with LED Type	RCI314R24	RCI314S15	RCI314T30
Order No.	<b>8870130000</b>	<b>8870140000</b>	<b>8870150000</b>
with test button + LED Type	RCI374R24	RCI374S15	RCI374T30
Order No.	<b>8870280000</b>	<b>8870290000</b>	<b>8870300000</b>

**Note**

## Relay couplers - RIDERSERIES

### RCI relay 2 CO contact AC/DC coil

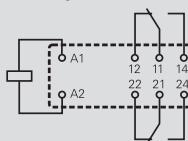
- 2000 VA breaking capacity
- Sturdy plug-in connection
- Optional test button with lock function and window
- Optional status indicator
- Optional suppressor



#### Circuit diagram

View of connections  
Dimensions in mm

2 C/O changeover contacts



#### Output

max. switching voltage AC	250 V
Continuous current	8 A / 1 contact
Contact base material	AgNi 90/10
Mechanical endurance	AC coil 5x10 <sup>6</sup> / DC coil 10x10 <sup>6</sup> switching operations
Response time / Drop-out time	7 ms / 2 ms

#### Rated data

Status indicator / Free wheel diode	see ordering data
Operating temperature	-40 °C...+70 °C
UL 94 flammability rating	V-0
Approvals	cURus; VDE;

#### Insulation coordination (IEC 60664)

Rated voltage	250 V
Creepage and clearance path input - output	8 mm
Overtoltage category	III
Pollution severity	3
Protective separation to VDE 0106 part 101	yes

#### Dimensions

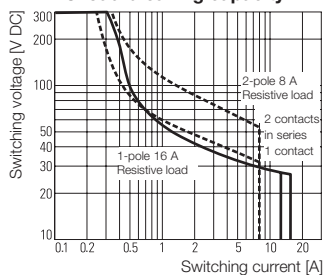
#### Single relay

Length x width x height mm 29 / 13.7 / x

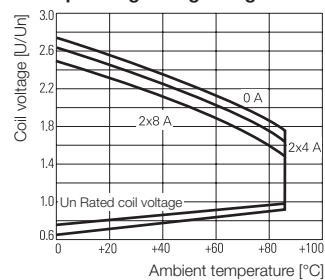
Note x = 25.5 without test button / 26.7 with test button

## Applications

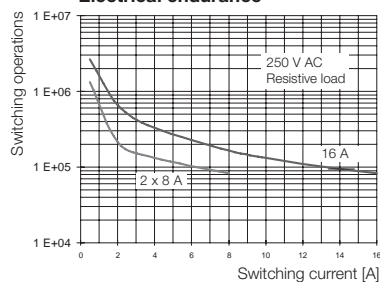
### DC load breaking capacity



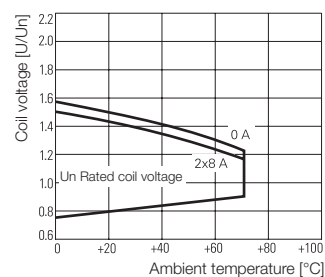
### Operating voltage range DC



### Electrical endurance



### Operating voltage range DC



**RCI relay**  
**2 CO contact AC/DC coil**

<b>Type code</b>	RCI				
<b>Type</b>	RIDER Control Industrial				
<b>Type of construction</b>	3 1-pole, 16 A 4 2-pole, 8 A				
<b>Type of contact</b>	1 1 CO contact without test button 2 2 CO contacts without test button 7 1 CO contact with test button 8 2 CO contacts with test button				
<b>Contact material</b>	4 AgNi 90/10				
<b>Coil</b>	012 12 V DC 024 24 V DC 048 48 V DC 110 110 V DC 524 24 V AC 615 115 V AC 730 230 V AC AB2 12 V DC+LED+diode AC4 24 V DC+LED+diode AE8 48 V DC+LED+diode BB0 110 V DC+LED+diode R24 24 V AC+LED S15 115 V AC+LED T30 230 V AC+LED				

**Ordering data**

Input	12 V DC 2CO	24 V DC 2CO	48 V DC 2CO	110 V DC 2CO
Rated voltage	12 V DC	24 V DC	48 V DC	110 V DC
DC Response/dropout Volt	8,4 V / 1,2 V	16,8 V / 2,4 V	33,6 V / 4,8 V	77 V / 11 V
Power rating	400 mW	400 mW	400 mW	400 mW
Rated current DC	33,3 mA	16,7 mA	8,7 mA	4,1 mA
Coil resistance	360 Ω ±10%	1440 Ω ±10%	5620 Ω ±10%	26600 Ω ±12%

Ordering data Relais				
Standard Type	RCI424012	RCI424024	RCI424048	RCI424110
Order No.	<b>8869870000</b>	<b>8869890000</b>	<b>8869900000</b>	<b>8869910000</b>
with test button Type	RCI484012	RCI484024	RCI484048	RCI484110
Order No.	<b>8870020000</b>	<b>8870030000</b>	<b>8870040000</b>	<b>8870050000</b>
with LED + protective diode* Type	RCI424AB2	RCI424AC4	RCI424AE8	RCI424BB0
Order No.	<b>8870170000</b>	<b>8870180000</b>	<b>8870190000</b>	<b>8870200000</b>
with test button + LED Type	RCI484AB2	RCI484AC4	RCI484AE8	RCI484BB0
+ protective diode* Order No.	<b>8870310000</b>	<b>8870320000</b>	<b>8870330000</b>	<b>8870340000</b>
<b>Note</b>	*Protective diode only with DC input			

**Ordering data**

Input	24 V AC 2CO	115 V AC 2CO	230 V AC 2CO	
Rated voltage	24 V AC	115 V AC	230 V AC	
AC Response/dropout Volt	18 V / 3,6 V	86,3 V / 17,3 V	172,5 V / 34,5 V	
Power rating	0,75 VA	0,75 VA	0,75 VA	
Rated current AC	31,6 mA	6,6 mA	3,2 mA	
Coil resistance	350 Ω ±10%	8100 Ω ±15%	32500 Ω ±15%	

Ordering data Relais				
Standard Type	RCI424524	RCI424615	RCI424730	
Order No.	<b>8869920000</b>	<b>8869930000</b>	<b>8869940000</b>	
with test button Type	RCI484524	RCI484615	RCI484730	
Order No.	<b>8870060000</b>	<b>8870070000</b>	<b>8870080000</b>	
with LED Type	RCI424R24	RCI424S15	RCI424T30	
Order No.	<b>8870210000</b>	<b>8870220000</b>	<b>8870230000</b>	
with test button + LED Type	RCI484R24	RCI484S15	RCI484T30	
Order No.	<b>8870350000</b>	<b>8870360000</b>	<b>8870370000</b>	
<b>Note</b>				