

Single and Three Phase, Foot Mounted

1/4 thru 300 Hp

NEMA 48 thru 449TY

Applications: Ideal for use where hazardous fumes or dust may be present.



Features: U.L. and CSA approved for Class I, Group D and Class I, Group C & D and Class II, Group F & G. Corrosion resistant epoxy finish. Shipped with U.L. and CSA approved cast conduit box assembled to each motor. 1.00 Service Factor. EM Super-E® explosion proof motors have NEMA Premium® efficiency and 3 year warranty.

Hp	RPM	NEMA Frame	Catalog Number	XP (a) Cls/Grp	List Price	Mult. Sym.	"C" Dim.	Aprx. Wt. (lb)	Full Load Efficiency	Voltage	Full Load Amps	EISA Status (a)	Notes (a)	
<b>Single Phase</b>														
1/4	1800	48	L4003A	⑧	487	K	12.85	27	55	115/208-230	2.5	C		
		56	L5000A	⑧	465	K	13.22	27	62	115/208-230	2.1	C		
			L5000A-C	④	579	K	13.22	32	62	115/208-230	2.1	C		
1/3	3600	48	L4005A	⑧	432	K	12.85	28	55	115/230	3	C		
	1800	48	L4006A	⑧	628	K	12.85	29	60	115/208-230	3	C		
		56	L5001A	⑧	598	K	13.22	29	60	115/208-230	3	C		
1/2	1200	56	L5002A	⑦	847	K	14.30	41	54	115/230	3.4	C		
	3600	56	L5003A	⑧	567	K	13.22	30	57	115/230	3.7	C		
		1800	48	L4009A	⑧	691	K	13.85	36	64	115/208-230	3.7	C	
56			L5004A	⑧	659	K	14.22	35	64	115/208-230	3.7	C		
3/4	1800	56	L5004A-C	④	773	K	14.22	41	64	115/208-230	3.7	C		
		56	L5005A	⑦	976	K	15.17	50	59	115/230	4	C		
		56	L5006A	⑦	640	K	14.30	40	62	115/230	4.9	C		
1	1800	56	L5007A	⑦	775	K	15.17	48	66	115/230	5.3	C		
		56	L5007A-C	②	888	K	15.17	52	66	115/230	5.3	C		
		56	L5022	①	1,128	K	16.04	57	59.5	115/230	5.7	C		
1 1/2	1800	56	L5009A	⑦	691	K	15.17	48	66	115/230	6	C		
		56	L5023A	①	882	K	15.17	48	67	115/230	6.5	C		
		143T	L5023T	①	864	L1	15.23	48	67	115/208-230	6.4	C		
2	1800	184	L5026	⑧	1,933	L1	16.92	82	67	115/208-230	7	C		
		3600	143T	L5030T	⑧	1,001	L1	15.23	53	70	115/208-230	7.5	C	
		1800	184	L5013	⑧	1,795	L1	16.92	75	70	115/230	9.5	C	
3	1800	3600	145T	L5031T	⑧	1,238	L1	16.11	60	74	115/208-230	11.5	C	
		1800	182T	L5027T	①	1,819	L1	17.42	81	75	115/230	11	C	
5	1800	3600	184T	L5028T	①	1,890	L1	17.42	81	76	115/230	14.5	C	
		1800	215	L5018	⑧	2,872	L1	19.49	152	79	115/230	15	C	
5	1800	215	L5020	①	3,653	L1	19.90	171	84	230	21	C		
<b>Three Phase</b>														
1/4	1800	48	M6002A	⑧	507	K	12.85	26	63	208-230/460	0.7	C		
1/3	1800	56	M7002A	⑧	609	K	13.22	28	67	208-230/460	0.8	C		
		1200	56	M7003A	⑦	874	K	14.36	34	70	208-230/460	0.8	C	
1/2	3600	56	M7005A	⑧	698	K	13.22	27	68	208-230/460	1.1	C		
		1800	48	M6007A	⑧	634	K	12.85	29	74	208-230/460	1	C	
			56	M7006A	⑧	634	K	13.22	30	74	208-230/460	1	C	
3/4	1200	56	M7007A	⑦	923	K	14.36	39	70	208-230/460	1.2	C		
		3600	56	M7009A	⑧	727	K	13.22	29	75	208-230/460	1.3	C	
	1800	56	M7010A	⑧	730	K	14.22	34	73	208-230/460	1.5	C		
		56	M7031A	⑦	980	K	15.23	44	77	208-230/460	1.4	C		
143T	M7031TA	⑦	980	L1	15.23	47	77	208-230/460	1.4	C				

(a) See notes on inside back flap.

**CAUTION:** Explosion-proof motors have a tight fit between mating parts to ensure the integrity of the explosion-proof enclosure. This can lead to an accumulation of moisture inside the motors due to condensation. Care should be used when selecting an explosion-proof motor, especially when installed outdoors and on intermittent duty. Consider explosion-proof motors on pages 110-114 for outdoor applications. These explosion-proof motors are not suitable for use with adjustable speed drives, inverter duty explosion-proof motors must be used. See page 232.

**Single and Three Phase, Foot Mounted**

Hp	RPM	NEMA Frame	Catalog Number	XP <sup>(a)</sup> CIs/Grp	List Price	Mult. Sym.	"C" Dim.	Aprx. Wt. (lb)	Full Load Efficiency	Voltage	Full Load Amps	EISA Status <sup>(a)</sup>	Notes <sup>(a)</sup>	
1	3600	56	M7013	Ⓢ	766	K	13.22	31	75.5	208-230/460	1.8	C		
		56	M7014	Ⓢ	799	K	14.30	38	75.5	208-230/460	1.8	C	19	
	1800	143T	EM7014T	Ⓢ	1,116	L1	15.23	49	85.5	230/460	1.5	A	19	
		143T	EM7114T	Ⓢ	1,536	L1	16.28	85	85.5	208-230/460	1.5	A	19	
		143T	EM7114T-C	Ⓢ	1,273	L1	16.28	85	85.5	208-230/460	1.5	A	19	
		143T	M7014T	Ⓢ	833	LS	14.36	44	82.5	230/460	1.6	D	19	
		143T	M7114T	Ⓢ	1,181	LS	16.28	78	82.5	230/460	1.6	D	19	
		182	M7015	Ⓢ	1,152	L1	15.23	44	82.5	208-230/460	1.8	B	19	
	1200	56	M7032	Ⓢ	980	K	15.17	44	75.5	230/460	1.7	C		
		145T	EM7032T	Ⓢ	1,248	L1	17.48	55	82.5	230/460	1.7	A		
145T		M7032T	Ⓢ	960	L1	15.23	52	80	230/460	1.8	D			
1 1/2	3600	143T	EM7018T	Ⓢ	1,021	L1	14.36	47	84	208-230/460	1.9	A	19	
		143T	M7018T	Ⓢ	786	L1	14.36	45	82.5	230/460	2.1	D	19	
	1800	56	M7034	Ⓢ	870	K	14.30	43	78.5	208-230/460	2.5	C	19	
		145T	EM7034T	Ⓢ	1,156	L1	16.10	56	86.5	230/460	2	A	19	
		145T	EM7134T	Ⓢ	1,556	L1	16.28	92	86.5	208-230/460	2.3	A		
		145T	EM7134T-C	Ⓢ	1,303	L1	16.28	85	86.5	230/460	2.1	A		
		145T	M7034T	Ⓢ	835	LS	15.23	48	84	230/460	2.4	D	19	
		145T	M7134T	Ⓢ	1,197	LS	16.28	81	84	208-230/460	2.3	D		
	1200	184	M7019	Ⓢ	1,460	L1	15.23	49	84	208-230/460	2.5	B	19	
		182T	EM7020T	Ⓢ	1,718	L1	17.42	96	87.5	230/460	2.6	A	19	
		182T	EM7120T	Ⓢ	1,910	L1	18.24	136	87.5	230/460	2.8	A	19	
	2	3600	145T	EM7071T	Ⓢ	1,045	L1	16.10	56	85.5	230/460	2.5	A	19
			145T	M7071T	Ⓢ	804	L1	15.23	52	84	230/460	2.6	D	19
		1800	56	M7037	Ⓢ	973	K	15.17	51	82.5	208-230/460	3.1	C	
145T			EM7037T	Ⓢ	1,261	L1	16.10	61	86.5	208-230/460	2.7	A	19	
145T			EM7137T	Ⓢ	1,638	L1	16.28	92	86.5	208-230/460	2.7	A	19	
145T			EM7137T-C	Ⓢ	1,339	L1	16.28	91	86.5	208-230/460	2.8	A		
145T			M7037T	Ⓢ	942	LS	15.23	51	84	230/460	3.1	D	19	
145T			M7137T	Ⓢ	1,260	LS	16.28	82	84	230/460	3.1	D	19	
1200		184	M7023	Ⓢ	1,495	L1	15.23	54	84	208-230/460	3.1	B	19	
		184T	EM7041T	Ⓢ	1,770	L1	18.92	109	88.5	230/460	3.3	A	19	
		184T	M7041T	Ⓢ	1,361	L1	18.92	92	86.5	230/460	3.3	D	19	
3		3600	145T	EM7075T	Ⓢ	1,238	L1	17.48	77	86.5	230/460	3.7	A	
			145T	M7075T	Ⓢ	952	L1	17.48	69	85.5	230/460	3.7	D	
			182T	EM7026T	Ⓢ	1,308	L1	16.05	70	86.5	230/460	3.7	A	19
	182T		EM7126T	Ⓢ	1,759	L1	17.56	130	86.5	230/460	3.5	A	19	
	182T		M7026T	Ⓢ	1,006	L1	16.05	66	85.5	230/460	3.7	D	19	
	182T		M7126T	Ⓢ	1,353	L1	17.56	127	85.5	230/460	3.7	D	19	
	184		M7026	Ⓢ	1,278	L1	15.55	64	85.5	208-230/460	3.9	B	19	
	1800	182T	EM7042T	Ⓢ	1,340	L1	18.92	90	89.5	230/460	4.2	A	19	
		182T	EM7142T	Ⓢ	1,636	L1	17.56	139	89.5	230/460	4	A	19	
		182T	EM7142T-C	Ⓢ	1,448	L1	17.56	136	89.5	230/460	4	A	19	
		182T	M7042T	Ⓢ	1,030	LS	17.42	81	87.5	230/460	4.1	D	19	
		182T	M7142T	Ⓢ	1,258	LS	17.56	132	87.5	230/460	4.8	D	19	
		213	M7027	Ⓢ	1,708	L1	16.44	110	87.5	230/460	4.5	B	19	
	1200	213T	EM7036T	Ⓢ	1,929	L1	20.32	152	89.5	230/460	3.7	A	19	
213T		M7036T	Ⓢ	1,484	L1	19.57	144	87.5	230/460	4.6	D	19		

<sup>(a)</sup> See notes on inside back flap.

■ Cast Iron Frame

**CAUTION:** Explosion-proof motors have a tight fit between mating parts to ensure the integrity of the explosion-proof enclosure. This can lead to an accumulation of moisture inside the motors due to condensation. Care should be used when selecting an explosion-proof motor, especially when installed outdoors and on intermittent duty. Consider explosion-proof motors on pages 110-114 for outdoor applications. These explosion-proof motors are not suitable for use with adjustable speed drives, inverter duty explosion-proof motors must be used. See page 232.

**Single and Three Phase, Foot Mounted**

Hp	RPM	NEMA Frame	Catalog Number	XP <sup>(a)</sup> Cls/Grp	List Price	Mult. Sym.	"C" Dim.	Aprx. Wt. (lb)	Full Load Efficiency	Voltage	Full Load Amps	EISA Status <sup>(a)</sup>	Notes <sup>(a)</sup>	
5	3600	184T	EM7072T	Ⓢ	1,538	L1	18.12	100	88.5	230/460	5.9	A	19	
		184T	EM7172T	Ⓢ	2,062	L1	17.56	155	88.5	230/460	5.7	A	19	
		184T	M7072T	Ⓢ	1,183	L1	18.12	93	87.5	230/460	5.6	D	19	
		184T	M7172T	Ⓢ	1,586	L1	17.56	145	87.5	230/460	5.6	D	19	
	1800	184T	EM7044T	Ⓢ	1,660	L1	18.92	105	89.5	230/460	6.5	A	19	
		184T	EM7144T	Ⓢ	2,051	L1	17.56	152	89.5	230/460	6.5	A	19	
		184T	EM7144T-C	②	1,746	L1	17.56	152	89.5	230/460	6.5	A	19	
		184T	M7044T	Ⓢ	1,277	LS	17.37	99	87.5	230/460	6.7	D	19	
		184T	M7144T	Ⓢ	1,490	LS	17.56	139	87.5	230/460	6.7	D	19	
		215	M7030	Ⓢ	2,211	L1	18.06	128	87.5	208-230/460	7	B	19	
		1200	215T	EM7040T	Ⓢ	2,529	L1	22.32	172	89.5	230/460	5.8	A	19
			215T	M7040T	Ⓢ	1,945	L1	20.32	161	87.5	230/460	7.5	D	19
7 1/2	3600	184T	EM7073T	①	2,018	L1	18.92	105	89.5	230/460	8.4	A	30	
		184T	M7073T	①	1,528	L1	18.92	94	88.5	230/460	8.3	D		
		213T	EM7045T	Ⓢ	2,122	L1	19.57	172	89.5	230/460	8.9	A	19	
		213T	EM7145T	Ⓢ	2,379	L1	19.90	162	89.5	230/460	8.6	A	19	
		213T	M7045T	Ⓢ	1,632	L1	19.57	166	88.5	230/460	8.9	D	19	
		213T	M7145T	Ⓢ	1,830	L1	19.90	154	88.5	230/460	8.9	D	19	
	1800	213T	EM7047T	Ⓢ	2,204	L1	19.57	178	91.7	230/460	10.1	A	19	
		213T	EM7147T	Ⓢ	2,430	L1	19.90	192	91.7	230/460	9.4	A	19	
		213T	EM7147T-C	②	2,184	L1	19.91	225	91.7	230/460	9.5	A	19	
		213T	M7047T	Ⓢ	1,574	LS	19.57	168	89.5	230/460	10.1	D	19	
		213T	M7147T	Ⓢ	1,800	LS	19.90	175	89.5	230/460	10.3	D	19	
		1200	254T	EM7048T	Ⓢ	2,994	L1	25.50	392	91	230/460	10.7	A	19
	254T		M7048T	Ⓢ	2,303	L1	25.50	381	89.5	230/460	11.1	D	19	
	10	3600	215T	EM7074T	①	2,392	L1	20.82	175	90.2	230/460	11.2	A	
			215T	EM7174T	Ⓢ	2,496	L1	19.31	188	90.2	230/460	11.1	A	19
			215T	M7074T	①	1,841	L1	20.07	162	89.5	230/460	11.6	D	
215T			M7174T	Ⓢ	1,920	L1	19.90	208	89.5	230/460	11.6	D	19	
1800		215T	EM7070T	Ⓢ	2,462	L1	22.32	175	91.7	230/460	12.5	A		
		215T	EM7170T	Ⓢ	3,114	LS	19.90	251	91.7	230/460	12.5	A	19	
		215T	EM7170T-C	④	3,035	L1	19.91	252	91.7	230/460	12.5	A	19	
		215T	M7070T	Ⓢ	1,652	LS	21.07	164	89.5	230/460	13.5	D		
		215T	M7170T	Ⓢ	2,124	LS	19.90	186	89.5	230/460	13	D	19	
		1200	256T	EM7065T	Ⓢ	3,600	L1	25.50	370	91	230/460	14.4	A	19
256T			M7065T	Ⓢ	2,769	L1	25.50	357	89.5	230/460	14.4	D	19	
15		3600	254T	EM7053T	Ⓢ	2,822	L1	25.50	305	91	230/460	17.2	A	19
	254T		M7053T	Ⓢ	2,171	L1	25.50	292	90.2	230/460	17	D	19	
	1800	254T	EM7054T	Ⓢ	3,307	L1	25.50	370	92.4	230/460	18	A	19	
		254T	EM7054T-C	②	3,388	L1	25.50	370	92.4	230/460	18	A	19	
		254T	M7054T	Ⓢ	2,461	LS	25.50	376	91	230/460	18.2	D	19	
		284T	EM7057T	Ⓢ	5,803	L1	28.61	450	91.7	230/460	21	A	19	
	284T	M7057T	Ⓢ	4,464	L1	28.61	436	90.2	230/460	21	D	19		
	3600	256T	EM7059T	Ⓢ	3,619	L1	25.50	395	91	230/460	23	A	19	
256T		M7059T	Ⓢ	2,784	L1	25.50	371	90.2	230/460	23	D	19		
1800		256T	EM7056T	Ⓢ	4,285	L1	25.50	393	93	230/460	24	A	19	
		256T	EM7056T-C	②	4,375	L1	25.50	393	93	230/460	24	A	19	
		256T	M7056T	Ⓢ	3,191	LS	25.50	381	91	230/460	25	D	19	
1200		286T	EM7079T	Ⓢ	5,958	L1	28.61	540	91.7	230/460	26	A	19	
	286T	M7079T	Ⓢ	4,583	L1	28.61	522	90.2	230/460	27	D	19		

<sup>a)</sup> See notes on inside back flap.

■ Cast Iron Frame

**CAUTION:** Explosion-proof motors have a tight fit between mating parts to ensure the integrity of the explosion-proof enclosure. This can lead to an accumulation of moisture inside the motors due to condensation. Care should be used when selecting an explosion-proof motor, especially when installed outdoors and on intermittent duty. Consider explosion-proof motors on pages 110-114 for outdoor applications. These explosion-proof motors are not suitable for use with adjustable speed drives, inverter duty explosion-proof motors must be used. See page 232.

General Information

Premium Efficient Super-E® Motors

Single Phase Motors

General Purpose Industrial Motors

Severe Duty Motors

Washdown Duty Motors

Explosion Proof Motors

Pump Motors

Light Industrial/Commercial Motors

HVAC Motors

**Single and Three Phase, Foot Mounted**

Hp	RPM	NEMA Frame	Catalog Number	XP <sup>(a)</sup> Cts/Grp	List Price	Mult. Sym.	"C" Dim.	Aprx. Wt. (lb)	Full Load Efficiency	Voltage	Full Load Amps	EISA Status <sup>(a)</sup>	Notes <sup>(a)</sup>
25	3600	284TS	EM7063T	⑧	4,817	L1	27.24	530	91.7	230/460	28	A	19
		284TS	M7063T	⑧	3,705	L1	27.24	517	91	230/460	28.5	D	19
	1800	284T	EM7058T	⑧	5,199	L1	28.61	542	93.6	230/460	30.5	A	19
		284T	EM7058T-C	②	5,300	L1	28.61	564	93.6	230/460	30.5	A	19
		284T	M7058T	⑧	3,948	LS	28.61	528	92.4	230/460	30.8	D	19
		324T	EM7082T	⑧	7,450	L1	32.00	740	93	230/460	32	A	19
1200	324T	M7082T	⑧	5,731	L1	32.00	721	91.7	230/460	31	D	19	
	30	3600	286TS	EM7083T	⑧	5,662	L1	27.24	560	91.7	230/460	33	A
286TS			M7083T	⑧	4,355	L1	27.24	534	91	230/460	34	D	19
1800		286T	EM7060T	⑧	6,338	L1	28.61	567	93.6	230/460	36	A	19
		286T	EM7060T-C	②	6,443	L1	28.61	589	93.6	230/460	37	A	19
		286T	M7060T	⑧	4,719	LS	28.61	491	92.4	230/460	36	D	19
1200		326T	EM7080T	⑧	8,219	L1	32.00	750	93	230/460	39	A	19
	326T	M7080T	⑧	6,322	L1	32.00	737	91.7	230/460	37	D	19	
40	3600	324TS	EM7067T	⑧	7,552	L1	30.50	740	92.4	230/460	45	A	19
		324TS	M7067T	⑧	5,809	L1	30.50	718	91.7	230/460	45	D	19
	1800	324T	EM7062T	⑧	8,494	L1	32.00	767	94.1	230/460	48	A	19
		324T	EM7062T-C	②	8,609	L1	32.12	834	94.1	230/460	48	A	19
		324T	M7062T	⑧	6,447	LS	32.00	750	93	230/460	47	D	19
	1200	364T	EM7084T	⑧	9,526	L1	33.44	910	94.1	230/460	49.4	A	19
364T		M7084T	⑧	7,328	L1	33.25	915	93	230/460	49	D	19	
50	3600	326TS	EM7081T	⑧	9,670	L1	30.50	724	93	230/460	56	A	19
		326TS	M7081T	⑧	7,439	L1	30.50	704	92.4	230/460	56	D	19
	1800	326T	EM7064T	⑧	11,326	LS	32.00	783	94.5	230/460	57	A	19
		326T	EM7064T-C	②	9,996	L1	32.12	851	94.5	230/460	57	A	19
		326T	M7064T	⑧	7,501	LS	32.00	769	93	230/460	60	D	19
	1200	365T	EM7085T	⑦	10,751	L1	33.44	950	94.1	230/460	61.7	A	19
365T		M7085T	⑦	8,270	L1	33.25	918	93	230/460	61	D	19	
60	1800	364T	EM7066T	⑦	12,670	LS	33.25	965	95	230/460	69	A	19
		364T	EM7066T-C	②	11,174	L1	33.25	989	95	230/460	69	A	19
		364T	M7066T	⑦	8,390	LS	33.25	969	93.6	230/460	69	D	19
	1200	404T	EM7086T	⑦	12,828	L1	38.31	1300	94.5	230/460	69	A	19
		404T	M7086T	⑦	9,868	L1	38.75	1233	93.6	230/460	70	D	19
		365T	EM7068T	②	13,345	L1	33.44	1065	95.4	230/460	86	A	19, 35
75	1800	365T	M7068T	②	10,465	LS	33.25	1031	94.1	230/460	85	D	19
		405T	EM7087T	⑦	14,352	L1	38.31	1335	94.5	230/460	86.9	A	19
	1200	405T	M7087T	⑦	11,224	L1	38.75	1338	93.6	230/460	88	D	19
		405T	EM7090T	②	15,498	L1	38.31	1335	95.4	230/460	112	A	19
100	1800	405T	M7090T	②	12,398	LS	38.75	1363	94.5	230/460	113	D	19
		125	1800	444T	EM74124T-4	②	18,111	L1	44.62	1908	95.4	460	139
444T	M74124T-4			②	16,567	LS	44.25	1327	94.5	460	143	D	19
150	1800	445T	EM74154T-4	②	20,240	L1	44.62	2048	95.8	460	165	A	19
		445T	M74154T-4	②	18,347	LS	44.25	1450	95	460	167	D	19
200	1800	447T	EM74204T-4	②	28,930	L1	48.40	2417	96.2	460	221	A	19
		447T	M74204T-4	②	27,037	LS	52.75	1975	95	460	224	D	19, 20
250	1800	447T	M74254T-4	②	31,526	L1	52.75	2016	95	460	284	B	19, 20
300	1800	449TY	M74304T-4	②	46,928	L1	54.25	2959	95	460	328	B	19, 20

<sup>(a)</sup> See notes on inside back flap.

■ Cast Iron Frame

**CAUTION:** Explosion-proof motors have a tight fit between mating parts to ensure the integrity of the explosion-proof enclosure. This can lead to an accumulation of moisture inside the motors due to condensation. Care should be used when selecting an explosion-proof motor, especially when installed outdoors and on intermittent duty. Consider explosion-proof motors on pages 110-114 for outdoor applications. These explosion-proof motors are not suitable for use with adjustable speed drives, inverter duty explosion-proof motors must be used. See page 232.

Single and Three Phase, C-Face

1/3 thru 50 Hp

NEMA 56C thru 326TC

**Applications:** Ideal for use on pumps, blowers and valves installed where hazardous fumes or dust may be present.

**Features:** Corrosion resistant epoxy finish. Positively locked drive end bearing. U.L. approved cast conduit box-standard. 1.00 S.F. U.L. and CSA approved for Class 1, Group D, Class 2, Group F & G Efficiency and 3 year warranty. No drip cover.



Hp	RPM	NEMA Frame	Catalog Number	XP (a) Cls/Grp	List Price	Mult. Sym.	"C" Dim.	Aprx. Wt. (lb)	Full Load Efficiency	Voltage	Full Load Amps	EISA Status (a)	Notes (a)
<b>Single Phase, C-Face, Foot Mounted</b>													
1/3	1800	56C	CL5001A	Ⓢ	729	K	13.22	30	60	115/208-230	3	C	
1/2	3600	56C	CL5003A	Ⓢ	640	K	13.22	31	57	115/230	3.7	C	
	1800	56C	CL5004A	Ⓢ	730	K	14.22	37	64	115/208-230	3.7	C	
3/4	1800	56C	CL5007A	⑦	814	K	15.17	48	66	115/230	5.3	C	
1	3600	56C	CL5009A	⑦	726	K	15.17	49	66	115/230	6	C	
	1800	56C	CL5023A	①	925	K	15.17	48	67	115/230	6.5	C	
1 1/2	3600	143TC	CL5030T	Ⓢ	1,138	L1	15.23	54	70	115/208-230	7.5	C	
	1800	184C	CL5013	Ⓢ	1,847	L1	16.93	81	70	115/230	9.5	C	
2	3600	143TC	CL5031T	Ⓢ	1,301	L1	16.10	61	74	115/208-230	11.5	C	
	1800	182TC	CL5027T	①	1,906	L1	18.86	96	75	115/230	11	C	
3	3600	184TC	CL5028T	①	1,928	L1	18.86	96	76	115/230	14.5	C	
	1800	215C	CL5018	Ⓢ	2,958	L1	19.56	154	79	115/230	15	C	
5	1800	215C	CL5020	①	3,766	L1	20.69	170	84	230	21	C	
<b>Single Phase, C-Face, Footless</b>													
1/4	1800	56C	VL5000A	Ⓢ	645	K	13.22	30	62	115/208-230	2.1	C	
1/3	3600	56C	VL4005A	Ⓢ	491	K	13.22	30	57	115/230	3.5	C	
	1800	56C	VL5001A	Ⓢ	659	K	13.22	29	60	115/208-230	3	C	
	1200	56C	VL5002A	⑦	883	K	14.30	42	54	115/230	3.4	C	
1/2	3600	56C	VL5003A	Ⓢ	635	K	13.22	30	57	115/230	3.7	C	
	1800	56C	VL5004A	Ⓢ	728	K	14.22	36	64	115/208-230	3.7	C	
	1200	56C	VL5005A	⑦	1,013	K	15.17	50	59	115/230	4	C	
3/4	3600	56C	VL5006A	⑦	679	K	14.30	40	62	115/230	4.9	C	
	1800	56C	VL5007A	⑦	811	K	15.17	47	66	115/230	5.3	C	
1	3600	56C	VL5009A	⑦	728	K	15.17	49	66	115/230	6	C	
	1800	56C	VL5023A	①	921	K	15.17	51	67	115/230	6.5	C	
1 1/2	3600	56C	VL5030	①	1,048	K	15.17	54	70	115/208-230	7.5	C	
	1800	56C	VL5024A	①	1,216	K	17.42	75	75	115/230	8	C	
2	1800	184C	VL5027	①	1,934	L1	16.93	91	75	115/208-230	11	C	
<b>Three Phase, C-Face, Foot Mounted</b>													
1/2	3600	56C	CM7005A	Ⓢ	764	K	13.22	28	68	208-230/460	1.1	C	
	1800	56C	CM7006A	Ⓢ	827	K	13.22	30	74	208-230/460	1	C	
3/4	3600	56C	CM7009A	Ⓢ	789	K	13.22	30	75	208-230/460	1.3	C	
	1800	56C	CM7010A	Ⓢ	843	K	14.22	35	73	208-230/460	1.5	C	
1	3600	56C	CM7013	Ⓢ	825	K	13.22	31	75.5	208-230/460	1.8	C	
		56C	CM7014	Ⓢ	899	K	14.30	41	75.5	208-230/460	1.8	C	19
	1800	143TC	CEM7014T	Ⓢ	1,183	L1	15.23	52	85.5	230/460	0	A	19
		143TC	CM7014T	Ⓢ	899	L1	14.36	44	82.5	230/460	1.6	D	19

(a) See notes on inside back flap.

**CAUTION:** Explosion-proof motors have a tight fit between mating parts to ensure the integrity of the explosion-proof enclosure. This can lead to an accumulation of moisture inside the motors due to condensation. Care should be used when selecting an explosion-proof motor, especially when installed outdoors and on intermittent duty. Consider explosion-proof motors on pages 110-114 for outdoor applications. These explosion-proof motors are not suitable for use with adjustable speed drives, inverter duty explosion-proof motors must be used. See page 232.

General Information

Premium Efficient Super-E® Motors

Single Phase Motors

General Purpose Industrial Motors

Severe Duty Motors

Washdown Duty Motors

Explosion Proof Motors

Pump Motors

Light Industrial/Commercial Motors

HVAC Motors

**Single and Three Phase, C-Face**

Hp	RPM	NEMA Frame	Catalog Number	XP <sup>(a)</sup> Cts/Grp	List Price	Mult. Sym.	"C" Dim.	Aprx. Wt. (lb)	Full Load Efficiency	Voltage	Full Load Amps	EISA Status <sup>(a)</sup>	Notes <sup>(a)</sup>
1 1/2	3600	143TC	CEM7018T	Ⓢ	1,171	L1	15.23	48	84	230/460	1.9	A	19
		143TC	CM7018T	Ⓢ	935	L1	14.36	47	82.5	230/460	2.1	D	19
	1800	56C	CM7034	Ⓢ	958	K	14.30	44	78.5	208-230/460	2.5	C	19
		145TC	CEM7034T	Ⓢ	1,281	L1	16.10	59	86.5	230/460	0	A	19
		145TC	CM7034T	Ⓢ	958	L1	15.23	49	84	230/460	2.4	D	19
2	3600	145TC	CEM7071T	Ⓢ	1,168	L1	16.10	92	85.5	230/460	2.5	A	19
		145TC	CM7071T	Ⓢ	1,032	L1	15.23	52	84	230/460	2.6	D	19
	1800	56C	CM7037	Ⓢ	1,037	K	15.17	52	82.5	208-230/460	3.1	C	19
		145TC	CEM7037T	Ⓢ	1,357	L1	16.10	65	86.5	208-230/460	2.7	A	19
		145TC	CM7037T	Ⓢ	1,037	L1	15.23	53	84	230/460	3.1	D	19
3	3600	145TC	CEM7075T	①	1,448	L1	17.49	75	86.5	230/460	3.7	A	19
		145TC	CM7075T	①	1,162	L1	17.48	69	85.5	230/460	3.7	D	19
	1800	182TC	CEM7042T	Ⓢ	1,645	L1	20.36	85	89.5	230/460	4.2	A	19
		182TC	CM7042T	Ⓢ	1,336	L1	18.86	92	87.5	230/460	4.1	D	19
		184TC	CEM7072T	Ⓢ	1,910	L1	18.86	97	88.5	230/460	5.9	A	19
5	3600	184TC	CM7072T	Ⓢ	1,555	L1	18.86	101	87.5	230/460	5.6	D	19
		184TC	CEM7044T	Ⓢ	1,989	L1	18.80	96	89.5	230/460	6.5	A	19
	1800	184TC	CM7044T	Ⓢ	1,607	L1	18.80	111	87.5	230/460	6.7	D	19
		184TC	CEM7073T	①	2,243	L1	20.36	120	89.5	230/460	8.4	A	30
		184TC	CM7073T	①	1,753	L1	20.36	111	88.5	230/460	8.3	D	19
7 1/2	3600	213TC	CEM7045T	Ⓢ	2,545	L1	20.33	170	89.5	230/460	8.9	A	19
		213TC	CM7045T	Ⓢ	2,055	L1	20.33	173	88.5	230/460	8.9	D	19
	1800	213TC	CEM7047T	Ⓢ	2,333	L1	20.36	175	91.7	230/460	9.4	A	19
		213TC	CM7047T	Ⓢ	2,088	L1	21.08	183	89.5	230/460	10.1	D	19
		215TC	CEM7174T	Ⓢ	2,778	L1	20.65	235	90.2	230/460	11.2	A	19
10	3600	215TC	CM7174T	Ⓢ	2,202	L1	20.65	215	89.5	230/460	11.6	D	19
		215TC	CEM7170T	Ⓢ	2,838	L1	20.65	252	91.7	230/460	12.2	A	19
	1800	215TC	CM7170T	Ⓢ	2,202	L1	20.65	232	89.5	230/460	13	D	19
		254TC	CEM7053T	Ⓢ	4,014	L1	26.00	305	91	230/460	17.2	A	19
		254TC	CM7053T	Ⓢ	2,363	L1	26.00	345	90.2	230/460	17	D	19
15	3600	254TC	CEM7054T	Ⓢ	4,694	L1	26.00	380	92.4	230/460	18	A	19
		254TC	CM7054T	Ⓢ	3,843	L1	26.00	386	91	230/460	18.2	D	19
	1800	256TC	CEM7059T	Ⓢ	4,812	L1	26.00	406	91	230/460	23	A	19
		256TC	CM7059T	Ⓢ	2,978	L1	26.00	372	90.2	230/460	23	D	19
		256TC	CEM7056T	Ⓢ	5,564	L1	26.00	405	93	230/460	24	A	19
20	3600	256TC	CM7056T	Ⓢ	4,464	L1	26.00	362	91	230/460	25	D	19
		284TSC	CEM7063T	Ⓢ	5,000	L1	27.24	535	91.7	230/460	28	A	19
	1800	284TSC	CM7063T	Ⓢ	3,888	L1	27.24	524	91	230/460	28.5	D	19
		284TC	CEM7058T	Ⓢ	6,813	L1	28.61	555	93.6	230/460	30.5	A	19
		284TC	CM7058T	Ⓢ	5,555	L1	28.61	532	92.4	230/460	30.8	D	19
30	1800	286TC	CEM7060T	Ⓢ	7,907	L1	28.61	574	93.6	230/460	36	A	19
		286TC	CM7060T	Ⓢ	6,279	L1	28.61	533	92.4	230/460	36	D	19
40	1800	324TC	CEM7062T	Ⓢ	10,547	L1	32.00	775	94.1	230/460	48	A	19
		324TC	CM7062T	Ⓢ	8,488	L1	32.00	735	93	230/460	47	D	19
50	1800	326TC	CEM7064T	Ⓢ	11,993	L1	32.00	795	94.5	230/460	57	A	19
		326TC	CM7064T	Ⓢ	9,600	L1	32.00	763	93	230/460	60	D	19
<b>Three Phase, C-Face, Footless</b>													
1/4	1800	56C	VM7001A	Ⓢ	768	K	13.22	26	63	208-230/460	0.7	C	
1/3	1800	56C	VM7002A	Ⓢ	784	K	13.22	28	67	208-230/460	0.8	C	
1/2	3600	56C	VM7005A	Ⓢ	759	K	13.22	26	68	208-230/460	1.1	C	
	1800	56C	VM7006A	Ⓢ	825	K	13.22	30	74	208-230/460	1	C	
	1200	56C	VM7007A	⑦	960	K	14.30	38	70	208-230/460	1.2	C	
3/4	3600	56C	VM7009A	Ⓢ	784	K	13.22	29	75	208-230/460	1.3	C	
	1800	56C	VM7010A	Ⓢ	840	K	14.22	33	73	208-230/460	1.5	C	
	1200	56C	VM7031A	⑦	1,008	K	15.17	44	77	208-230/460	1.4	C	

<sup>(a)</sup> See notes on inside back flap.

■ Cast Iron Frame

**CAUTION:** Explosion-proof motors have a tight fit between mating parts to ensure the integrity of the explosion-proof enclosure. This can lead to an accumulation of moisture inside the motors due to condensation. Care should be used when selecting an explosion-proof motor, especially when installed outdoors and on intermittent duty. Consider explosion-proof motors on pages 110-114 for outdoor applications. These explosion-proof motors are not suitable for use with adjustable speed drives, inverter duty explosion-proof motors must be used. See page 232.

**Single and Three Phase, C-Face**

Hp	RPM	NEMA Frame	Catalog Number	XP <sup>(a)</sup> Cls/Grp	List Price	Mult. Sym.	"C" Dim.	Aprx. Wt. (lb)	Full Load Efficiency	Voltage	Full Load Amps	EISA Status <sup>(a)</sup>	Notes <sup>(a)</sup>
1	3600	56C	VM7013	Ⓢ	817	K	13.22	31	75.5	208-230/460	1.8	C	
	1800	56C	VM7014	Ⓢ	882	K	15.22	41	75.5	208-230/460	1.8	C	
		143TC	VM7014T	Ⓢ	952	L1	14.36	40	82.5	208-230/460	1.8	B	19
1 1/2	1200	56C	VM7032	①	1,062	K	15.15	46	75.5	230/460	1.9	C	
	3600	143TC	VM7018T	Ⓢ	1,003	L1	14.36	41	75.5	208-230/460	2.3	B	19
		56C	VM7034	Ⓢ	950	K	14.20	43	78.5	208-230/460	2.5	C	19
		145TC	VM7034T	Ⓢ	1,026	L1	14.36	43	78.5	208-230/460	2.5	B	19
	1200	145TC	VM7035T	①	1,173	L1	16.10	58	80	208-230/460	2.6	B	
2	3600	145TC	VM7071T	Ⓢ	1,122	L1	15.23	47	78.5	208-230/460	2.7	B	19
	1800	56C	VM7037	Ⓢ	1,027	K	15.17	51	82.5	208-230/460	3.1	C	19
		145TC	VM7037T	Ⓢ	1,110	L1	15.23	50	82.5	208-230/460	3.1	B	19
3	3600	145TC	VM7075T	①	1,245	L1	15.23	54	82.5	208-230/460	3.8	B	
		182TC	VM7026T	Ⓢ	1,313	L1	17.49	74	81.5	208-230/460	3.9	B	19
	1800	182TC	VM7042T	Ⓢ	1,423	L1	17.49	81	82.5	230/460	4.3	B	19
5	3600	184TC	VM7072T	Ⓢ	1,660	L1	18.06	97	85.5	208-230/460	6	B	19
	1800	184TC	VM7044T	Ⓢ	1,733	L1	18.80	111	86.5	230/460	6.5	B	19
7 1/2	3600	184TC	VM7073T	①	1,874	L1	20.36	110	87.5	230/460	8.8	B	19
		213TC	VM7045T	Ⓢ	2,182	L1	19.19	144	84	230/460	9.3	B	19
	1800	213TC	VM7047T	Ⓢ	2,006	L1	19.19	156	89.5	230/460	10.1	B	19
10	1800	215TC	VM7170T	Ⓢ	2,433	L1	20.65	220	88.5	230/460	13.8	B	19

<sup>(a)</sup> See notes on inside back flap.

**CAUTION:** Explosion-proof motors have a tight fit between mating parts to ensure the integrity of the explosion-proof enclosure. This can lead to an accumulation of moisture inside the motors due to condensation. Care should be used when selecting an explosion-proof motor, especially when installed outdoors and on intermittent duty. Consider explosion-proof motors on pages 110-114 for outdoor applications. These explosion-proof motors are not suitable for use with adjustable speed drives, inverter duty explosion-proof motors must be used. See page 232.

General Information

Premium Efficient Super-E® Motors

Single Phase Motors

General Purpose Industrial Motors

Severe Duty Motors

Washdown Duty Motors

Explosion Proof Motors

Pump Motors

Light Industrial/Commercial Motors

HVAC Motors

**575 Volt,  
Three Phase,  
Explosion Proof**

**1/2 thru 40 Hp**

**NEMA 56 thru 324T**

**Applications:** Shakers, blowers, pumps, mixers, etc.



**Features:** All models have torques exceeding NEMA standards, copper windings, rotors that are corrosion treated and precision balanced. 1.00 Service Factor. UL and CSA approved for Class I, Group D, Class II, Group, F & G, T3C.

Hp	RPM	NEMA Frame	Catalog Number	XP <sup>(a)</sup> CIs/Grp	List Price	Mult. Sym.	"C" Dim.	Aprx. Wt. (lb)	Full Load Efficiency	Voltage	Full Load Amps	EISA Status <sup>(a)</sup>	Notes <sup>(a)</sup>
<b>Foot Mounted, No Drip Cover</b>													
1/2	1800	56	M7006-5	Ⓢ	634	K	14.30	37	74	575	0.9	C	
3/4	1800	56	M7010-5	Ⓢ	730	K	14.30	35	76	575	1.2	C	
1	3600	56	M7013-5	Ⓢ	766	K	13.22	31	75.5	575	1.2	C	
		56	M7014-5	Ⓢ	799	K	14.30	38	75	575	1.4	C	
	1800	143T	EM7014T-5	Ⓢ	1,280	LS	15.23	49	85.5	575	1.2	A	
		143T	M7014T-5	Ⓢ	833	LS	14.36	43	82.5	575	1.2	D	
1 1/2	3600	143T	EM7018T-5	Ⓢ	1,021	L1	14.36	47	84	575	1.6	A	
		143T	M7018T-5	Ⓢ	786	L1	15.23	49	82.5	575	1.5	D	
	1800	145T	EM7034T-5	Ⓢ	1,326	LS	16.10	56	86.5	575	1.6	A	
		145T	M7034T-5	Ⓢ	835	LS	15.23	50	84	575	1.7	D	
2	3600	145T	EM7071T-5	Ⓢ	1,045	L1	16.10	56	85.5	575	2.2	A	
		145T	M7071T-5	Ⓢ	804	L1	15.23	53	84	575	2.1	D	
	1800	145T	EM7037T-5	Ⓢ	1,446	LS	16.10	61	86.5	575	2.2	A	
		145T	M7037T-5	Ⓢ	942	LS	15.23	53	84	575	2.2	D	
3	1800	182T	EM7042T-5	Ⓢ	1,340	L1	18.92	90	89.5	575	3.4	A	
		182T	M7042T-5	Ⓢ	1,030	LS	17.42	78	87.5	575	3.3	D	
5	3600	184T	EM7072T-5	Ⓢ	1,538	L1	18.12	100	88.5	575	4.8	A	
		184T	M7072T-5	Ⓢ	1,183	L1	18.12	94	87.5	575	5.5	D	
	1800	184T	EM7044T-5	Ⓢ	1,660	L1	18.92	105	89.5	575	5.2	A	
		184T	M7044T-5	Ⓢ	1,277	LS	17.37	97	87.5	575	5.2	D	
7 1/2	1800	213T	EM7047T-5	Ⓢ	2,204	L1	19.57	178	91.7	575	8.1	A	
		213T	M7047T-5	Ⓢ	1,574	LS	19.57	170	89.5	575	8.1	D	
10	1800	215T	EM7170T-5	Ⓢ	2,767	L1	19.90	251	91.7	575	9.8	A	
		215T	M7170T-5	Ⓢ	2,131	L1	19.90	217	89.5	575	10.4	D	
15	1800	254T	EM7054T-5	Ⓢ	3,791	LS	25.50	370	92.4	575	14.4	A	
		254T	M7054T-5	Ⓢ	2,461	LS	25.50	351	91	575	14.9	D	
20	1800	256T	EM7056T-5	Ⓢ	4,913	LS	25.50	393	93	575	19.2	A	
		256T	M7056T-5	Ⓢ	3,191	LS	25.50	361	91	575	19.2	D	
25	1800	284T	EM7058T-5	Ⓢ	5,960	LS	28.61	542	93.6	575	24.4	A	
		284T	M7058T-5	Ⓢ	3,948	LS	28.61	528	92.4	575	24.6	D	
30	1800	286T	EM7060T-5	Ⓢ	7,266	L1	28.61	567	93.6	575	48.4	A	
		286T	M7060T-5	Ⓢ	4,735	L1	28.61	552	92.4	575	28.8	D	
40	1800	324T	EM7062T-5	Ⓢ	9,738	LS	32.00	767	94.1	575	38.4	A	
		324T	M7062T-5	Ⓢ	6,447	LS	32.00	761	93	575	37.6	D	

<sup>(a)</sup> See notes on inside back flap.

■ Cast Iron Frame

**CAUTION:** Explosion-proof motors have a tight fit between mating parts to ensure the integrity of the explosion-proof enclosure. This can lead to an accumulation of moisture inside the motors due to condensation. Care should be used when selecting an explosion-proof motor, especially when installed outdoors and on intermittent duty. The Explosion-proof motors are not suitable for use with adjustable speed drives. Inverter Duty Explosion-proof motors must be used. See page 232.



575 Volt, Three Phase, Explosion Proof

Hp	RPM	NEMA Frame	Catalog Number	XP <sup>(a)</sup> CIs/Grp	List Price	Mult. Sym.	"C" Dim.	Aprx. Wt. (lb)	Full Load Efficiency	Voltage	Full Load Amps	EISA Status <sup>(a)</sup>	Notes <sup>(a)</sup>
<b>C-Face, Footless, No Drip Cover</b>													
1/2	1800	56C	VM7006-5	Ⓢ	825	K	14.30	34	74	575	0.9	C	
3/4	1800	56C	VM7010-5	Ⓢ	840	K	14.30	35	76	575	1.2	C	
1	1800	56C	VM7014-5	Ⓢ	882	K	14.30	40	75	575	1.4	C	
		143TC	VEM7014T-5	Ⓢ	1,167	L1	15.23	44	85.5	575	1.1	B	
		143TC	VM7014T-5	Ⓢ	952	L1	14.36	44	82.5	575	1.2	B	
1 1/2	1800	145TC	VEM7034T-5	Ⓢ	1,272	L1	16.10	52	86.5	575	1.6	B	
		145TC	VM7034T-5	Ⓢ	1,026	L1	15.23	50	84	575	1.7	B	
2	1800	145TC	VEM7037T-5	Ⓢ	1,348	L1	17.48	53	86.5	575	2.2	B	
		145TC	VM7037T-5	Ⓢ	1,110	L1	15.23	51	84	575	2.2	B	
3	1800	182TC	VEM7042T-5	Ⓢ	1,522	L1	18.86	95	89.5	575	3.2	B	
		182TC	VM7042T-5	Ⓢ	1,423	L1	18.86	92	87.5	575	3.3	B	
5	1800	184TC	VEM7044T-5	Ⓢ	1,798	L1	18.80	112	89.5	575	5.2	B	
		184TC	VM7044T-5	Ⓢ	1,733	L1	18.80	109	87.5	575	5.2	B	
7 1/2	1800	213TC	VM7047T-5	Ⓢ	2,006	L1	19.19	171	89.5	575	8.1	B	

<sup>(a)</sup> See notes on inside back flap.

■ Cast Iron Frame

**CAUTION:** Explosion-proof motors have a tight fit between mating parts to ensure the integrity of the explosion-proof enclosure. This can lead to an accumulation of moisture inside the motors due to condensation. Care should be used when selecting an explosion-proof motor, especially when installed outdoors and on intermittent duty. The Explosion-proof motors are not suitable for use with adjustable speed drives. Inverter Duty Explosion-proof motors must be used. See page 232.

General Information

Premium Efficient Super-E® Motors

Single Phase Motors

General Purpose Industrial Motors

Severe Duty Motors

Washdown Duty Motors

Explosion Proof Motors

Pump Motors

Light Industrial/Commercial Motors

HVAC Motors

**Severe Duty,  
Three Phase,  
1.15 Service Factor**

**3 thru 150 Hp**

**NEMA 182T thru 445T**

**Applications:** Harsh industrial environments requiring protection against corrosion, that contain hazardous gas and vapor, dust fibers, filings or other material that may have explosive properties.

**Features:** 1.15 Service factor, Severe Duty design includes rugged cast iron construction with corrosion resistant epoxy finish. Shaft slingers & inner caps installed on both ends of motor for bearing protection. Includes normally closed thermostats. UL & CSA approved for Division 1, Class 1, Group D, Class 2, Group E, F & G, T3C temperature code.



Hp	RPM	NEMA Frame	Catalog Number	XP <sup>(a)</sup> CIs/Grp	List Price	Mult. Sym.	"C" Dim.	Aprx. Wt. (lb)	Full Load Efficiency	Voltage	Full Load Amps	EISA Status <sup>(a)</sup>	Notes <sup>(a)</sup>
3	1800	182T	<b>EM7542T-I</b>	③	1,389	SD	18.92	90	89.5	230/460	4.2	A	1
	1200	213T	<b>EM7536T-I</b>	③	1,996	SD	20.32	152	89.5	230/460	4.6	A	1
5	3600	184T	<b>EM7572T-I</b>	③	1,827	SD	18.12	100	88.5	230/460	5.9	A	1
	1800	184T	<b>EM7544T-I</b>	③	1,721	SD	18.92	105	89.5	230/460	6.5	A	1
	1200	215T	<b>EM7540T-I</b>	③	2,618	SD	22.32	172	89.5	230/460	7.2	A	1
7 1/2	1800	213T	<b>EM7547T-I</b>	③	2,122	SD	19.57	178	91.7	230/460	10.1	A	1
	1200	254T	<b>EM7548T-I</b>	③	3,099	SD	25.50	392	91	230/460	10.7	A	1
10	3600	215T	<b>EM7574T-I</b>	③	2,583	SD	22.32	190	90.2	230/460	11.1	A	1
	1800	215T	<b>EM7670T-I</b>	③	2,865	SD	19.90	251	91.7	230/460	12.2	A	1
	1200	256T	<b>EM7565T-I</b>	③	3,726	SD	25.50	370	91	230/460	14.4	A	1
15	1800	254T	<b>EM7554T-I</b>	③	3,436	SD	25.50	370	92.4	230/460	18	A	1
20	3600	256T	<b>EM7559T-I</b>	③	3,746	SD	25.50	395	91	230/460	23	A	1
	1800	256T	<b>EM7556T-I</b>	③	4,302	SD	25.50	393	93	230/460	24	A	1
25	1800	284T	<b>EM7558T-I</b>	③	5,400	SD	28.61	542	93.6	230/460	30.5	A	1
30	1800	286T	<b>EM7560T-I</b>	③	6,595	SD	28.61	567	93.6	230/460	36	A	1
40	1800	324T	<b>EM7562T-I</b>	③	8,825	SD	32.00	767	94.1	230/460	48	A	1
50	1800	326T	<b>EM7564T-I</b>	③	10,267	SD	32.00	790	94.5	230/460	58	A	1
	1200	365T	<b>EM7585T-I</b>	③	11,127	SD	33.44	950	94.1	230/460	61.7	A	1
60	1800	364T	<b>EM7566T-I</b>	③	11,608	SD	33.44	984	95	230/460	95	A	1
75	1800	365T	<b>EM7568T-I</b>	③	12,083	SD	33.44	973	95.4	230/460	95.4	A	1
	1200	405T	<b>EM7587T-I</b>	③	14,855	SD	38.31	1335	94.5	230/460	86.9	A	1
100	1800	405T	<b>EM7590T-I</b>	③	15,497	SD	38.31	1404	95.4	460	112	A	1
	1200	444T	<b>EM7599T-I</b>	③	18,402	SD	44.62	1860	95	460	115	A	1
125	1800	444T	<b>EM7600T-I</b>	③	18,709	SD	44.62	1908	95.4	460	95.8	A	1
150	1800	445T	<b>EM7596T-I</b>	③	20,908	SD	44.62	2048	95.8	460	96.2	A	1

<sup>(a)</sup> See notes on inside back flap.  
 ■ Cast Iron Frame

These motors expel condensation better than standard explosion proof designs. They are recommended for applications where motors may run intermittently, applications where explosion-proof motors are installed outdoors exposed to the environment, and may not be operated for extended periods of time. These explosion-proof motors are not suitable for use with adjustable speed drives. Inverter duty explosion-proof motors must be used. See page 232.

**Drill Rig Duty,  
Three Phase,  
1.15 Service Factor**

**1 thru 100 Hp**

**NEMA 56C thru 405T**



**Applications:** On and off shore drill rig service, bulk fuel terminals, and transfer stations. For use in high humidity hazardous-duty applications driving pumps, compressors, blowers, fans, and many other loads that require 1.15 service factor explosion-proof motors. Designed with features for use in the petroleum industry. Includes Class I, Group C & D approval for use in areas where hydrogen sulfide is present.

**Features:** Labyrinth-type recessed shaft slinger for increased bearing protection Explosion-proof breather/drain to prevent build up of condensation. 40°C ambient, Class F insulation. Corrosion resistant finish with two part epoxy coating. UL and CSA approved for Class I, Group C & D. 1.15 service factor. Suitable for 55°C @ 1.0 service factor.

Hp	RPM	NEMA Frame	Catalog Number	XP (a) Cls/Grp	List Price	Mult. Sym.	"C" Dim.	Aprx. Wt. (lb)	Full Load Efficiency	Voltage	Full Load Amps	EISA Status (a)	Notes (a)
<b>Foot Mounted</b>													
1	3600	143T	EM7013T-I	Ⓢ	1,144	SD	15.23	45	85.5	230/460	1.4	A	1, 19
		143T	M7013T-I	Ⓢ	880	SD	14.36	41	82.5	230/460	1.8	D	1, 19
	1800	143T	EM7014T-I	Ⓢ	1,126	SD	15.23	49	85.5	230/460	1.5	A	1, 19
		143T	M7014T-I	Ⓢ	841	SD	14.12	52	82.5	230/460	1.6	D	1, 19
	1200	145T	EM7032T-I	Ⓢ	1,248	SD	17.48	55	82.5	230/460	1.7	A	1, 19
		145T	M7032T-I	Ⓢ	960	SD	15.09	50	80	230/460	1.8	D	1, 19
1 1/2	3600	143T	EM7018T-I	Ⓢ	1,135	SD	14.36	47	84	230/460	1.9	A	1, 19
		143T	M7018T-I	Ⓢ	900	SD	14.12	55	82.5	230/460	2.1	D	1, 19
	1800	145T	EM7034T-I	Ⓢ	1,166	SD	16.10	56	86.5	230/460	2	A	1, 19
		145T	M7034T-I	Ⓢ	843	SD	15.09	57	84	230/460	2.4	D	1, 19
	1200	182T	EM7020T-I	Ⓢ	1,718	SD	17.42	96	87.5	230/460	2.6	A	1, 19
		182T	M7020T-I	Ⓢ	1,322	SD	18.27	99	85.5	230/460	2.8	D	1, 19
2	3600	145T	EM7071T-I	Ⓢ	1,241	SD	16.10	56	85.5	230/460	2.5	A	1, 19
		145T	M7071T-I	Ⓢ	1,000	SD	15.23	62	84	230/460	2.6	D	1, 19
	1800	145T	EM7037T-I	Ⓢ	1,271	SD	16.10	61	86.5	230/460	2.7	A	1, 19
		145T	M7037T-I	Ⓢ	951	SD	15.09	60	84	230/460	3.1	D	1, 19
	1200	184T	EM7041T-I	Ⓢ	1,770	SD	18.92	109	88.5	230/460	3.3	A	1, 19
		184T	M7041T-I	Ⓢ	1,361	SD	18.27	114	86.5	230/460	3.3	D	1, 19
3	3600	182T	EM7026T-I	Ⓢ	1,422	SD	16.05	70	86.5	230/460	3.7	A	1, 19
		182T	M7026T-I	Ⓢ	1,121	SD	16.77	91	85.5	230/460	3.5	D	1, 19
	1800	182T	EM7042T-I	Ⓢ	1,341	SD	18.92	90	89.5	230/460	4.2	A	1, 19
		182T	EM7042T-I-5	Ⓢ	1,341	SD	18.92	90	89.5	575	3.4	A	1, 19
		182T	M7042T-I	Ⓢ	1,033	SD	18.27	105	87.5	230/460	4.1	D	1, 19
		182T	M7042T-I-5	Ⓢ	1,033	SD	18.27	99	87.5	575	3.3	D	1, 19
1200	213T	EM7036T-I	Ⓢ	1,929	SD	20.32	152	89.5	230/460	4.6	A	1, 19	
	213T	M7036T-I	Ⓢ	1,484	SD	19.57	155	87.5	230/460	4.6	D	1, 19	
5	3600	184T	EM7072T-I	Ⓢ	1,766	SD	18.12	100	88.5	230/460	5.9	A	1, 19
		184T	M7072T-I	Ⓢ	1,412	SD	18.27	108	87.5	230/460	5.6	D	1, 19
	1800	184T	EM7044T-I	Ⓢ	1,663	SD	18.92	105	89.5	230/460	6.5	A	1, 19
		184T	EM7044T-I-5	Ⓢ	1,663	SD	18.92	105	89.5	575	5.2	A	1, 19
		184T	M7044T-I	Ⓢ	1,281	SD	18.27	118	87.5	230/460	6.7	D	1, 19
		184T	M7044T-I-5	Ⓢ	1,281	SD	18.27	114	87.5	575	5.2	D	1, 19
1200	215T	EM7040T-I	Ⓢ	2,529	SD	22.32	172	89.5	230/460	7.2	A	1, 19	
	215T	M7040T-I	Ⓢ	1,945	SD	20.32	165	87.5	230/460	7.4	D	1, 19	
7 1/2	3600	213T	EM7045T-I	Ⓢ	2,122	SD	19.57	172	89.5	230/460	8.9	A	1, 19
		213T	M7045T-I	Ⓢ	1,632	SD	19.57	159	88.5	230/460	8.9	D	1, 19
	1800	213T	EM7047T-I	Ⓢ	2,050	SD	19.57	178	91.7	230/460	10.1	A	1, 19
		213T	EM7047T-I-5	Ⓢ	2,050	SD	19.57	178	91.7	575	8.1	A	1, 19
		213T	M7047T-I	Ⓢ	1,579	SD	20.32	177	89.5	230/460	10.2	D	1, 19
		213T	M7047T-I-5	Ⓢ	1,579	SD	20.32	165	89.5	575	8.2	D	1, 19
1200	254T	EM7048T-I	Ⓢ	2,994	SD	25.50	392	91	230/460	10.7	A	1, 19	
	254T	M7048T-I	Ⓢ	2,303	SD	25.50	381	89.5	230/460	11.1	D	1, 19	

(a) See notes on inside back flap.

■ Cast Iron Frame

These motors expel condensation better than standard explosion proof designs. They are recommended for applications where motors may run intermittently, applications where explosion-proof motors are installed outdoors exposed to the environment, and may not be operated for extended periods of time. These explosion-proof motors are not suitable for use with adjustable speed drives. Inverter duty explosion-proof motors must be used. See page 232.

General Information

Premium Efficient Super-E® Motors

Single Phase Motors

General Purpose Industrial Motors

Severe Duty Motors

Washdown Duty Motors

Explosion Proof Motors

Pump Motors

Light Industrial/Commercial Motors

HVAC Motors

**Drill Rig Duty, Three Phase, 1.15 Service Factor**

Hp	RPM	NEMA Frame	Catalog Number	XP <sup>(a)</sup> Cts/Grp	List Price	Mult. Sym.	"C" Dim.	Aprx. Wt. (lb)	Full Load Efficiency	Voltage	Full Load Amps	EISA Status <sup>(a)</sup>	Notes <sup>(a)</sup>	
10	3600	215T	EM7174T-I	⑤	2,496	SD	19.31	188	90.2	230/460	11.1	A	1, 19	
		215T	M7174T-I	⑤	1,920	SD	20.03	228	89.5	230/460	11.6	D	1, 19	
	1800	215T	EM7170T-I	⑤	2,767	SD	19.90	251	91.7	230/460	12.2	A	1, 19	
		215T	EM7170T-I-5	⑤	2,767	SD	19.90	251	91.7	575	9.8	A	1, 19	
		215T	M7170T-I	⑤	2,131	SD	20.03	225	89.5	230/460	12.7	D	1, 19	
		215T	M7170T-I-5	⑤	2,131	SD	20.03	230	89.5	575	11.4	D	1, 19	
		256T	EM7065T-I	⑤	3,600	SD	25.50	370	91	230/460	14.4	A	1, 19	
	256T	M7065T-I	⑤	2,769	SD	25.50	369	89.5	230/460	14.4	D	1, 19		
	15	3600	254T	EM7053T-I	⑤	2,822	SD	25.50	305	91	230/460	17.2	A	1, 19
			254T	M7053T-I	⑤	2,171	SD	25.50	344	90.2	230/460	17	D	1, 19
1800		254T	EM7054T-I	⑤	3,320	SD	25.50	370	92.4	230/460	18	A	1, 19	
		254T	EM7054T-I-5	⑤	3,320	SD	25.50	370	92.4	575	14.4	A	1, 19	
		254T	M7054T-I	⑤	2,469	SD	25.50	387	91	230/460	18.2	D	1, 19	
		254T	M7054T-I-5	⑤	2,469	SD	25.50	381	91	575	14.9	D	1, 19	
		284T	EM7057T-I	⑤	5,803	SD	28.61	450	91.7	230/460	21	A	1, 19	
284T		M7057T-I	⑤	4,464	SD	28.61	430	90.2	230/460	21	D	1, 19		
20		3600	256T	EM7059T-I	⑤	3,619	SD	25.50	395	91	230/460	23	A	1, 19
			256T	M7059T-I	⑤	2,784	SD	25.50	344	90.2	230/460	23	D	1, 19
	1800	256T	EM7056T-I	⑤	4,156	SD	25.50	393	93	230/460	24	A	1, 19	
		256T	EM7056T-I-5	⑤	4,156	SD	25.50	393	93	575	19.2	A	1, 19	
		256T	M7056T-I	⑤	3,201	SD	25.50	387	91	230/460	25	D	1, 19	
		256T	M7056T-I-5	⑤	3,201	SD	25.50	381	91	575	19.2	D	1, 19	
		286T	EM7079T-I	⑤	5,958	SD	28.61	540	91.7	230/460	26	A	1, 19	
	286T	M7079T-I	⑤	4,583	SD	28.61	436	90.2	230/460	27	D	1, 19		
	25	3600	284TS	EM7063T-I	⑤	4,817	SD	27.24	530	91.7	230/460	28	A	1, 19
			284TS	M7063T-I	⑤	3,705	SD	27.23	445	91	230/460	28.5	D	1, 19
1800		284T	EM7058T-I	⑤	5,218	SD	28.61	542	93.6	230/460	30.5	A	1, 19	
		284T	EM7058T-I-5	⑤	5,218	SD	28.61	542	93.6	575	24.4	A	1, 19	
		284T	M7058T-I	⑤	3,960	SD	28.61	549	92.4	230/460	30.8	D	1, 19	
		284T	M7058T-I-5	⑤	3,960	SD	28.61	415	92.4	575	24.6	D	1, 19	
		324T	EM7082T-I	⑤	7,450	SD	32.00	740	93	230/460	32	A	1, 19	
324T		M7082T-I	⑤	5,731	SD	32.00	685	91.7	230/460	31	D	1, 19		
30		3600	286TS	EM7083T-I	⑤	5,662	SD	27.24	560	91.7	230/460	33	A	1, 19
			286TS	M7083T-I	⑤	4,355	SD	27.23	445	91	230/460	34	D	1, 19
	1800	286T	EM7060T-I	⑤	6,363	SD	28.61	567	93.6	230/460	36	A	1, 19	
		286T	EM7060T-I-5	⑤	6,363	SD	28.61	567	93.6	575	48.4	A	1, 19	
		286T	M7060T-I	⑤	4,735	SD	28.61	584	92.4	230/460	36	D	1, 19	
		286T	M7060T-I-5	⑤	4,735	SD	28.61	583	92.4	575	28.8	D	1, 19	
		326T	EM7080T-I	⑤	8,219	SD	32.00	750	93	230/460	39	A	1, 19	
	326T	M7080T-I	⑤	6,322	SD	32.00	751	91.7	230/460	37	D	1, 19		
	40	3600	324TS	EM7067T-I	⑤	7,552	SD	30.50	740	92.4	230/460	45	A	1, 19
			324TS	M7067T-I	⑤	5,809	SD	30.50	649	91.7	230/460	45	D	1, 19
1800		324T	EM7062T-I	⑤	8,527	SD	32.00	767	94.1	230/460	48	A	1, 19	
		324T	EM7062T-I-5	⑤	8,527	SD	32.00	767	94.1	575	38.4	A	1, 19	
		324T	M7062T-I	⑤	6,468	SD	32.00	765	93	230/460	47	D	1, 19	
		324T	M7062T-I-5	⑤	6,468	SD	32.00	764	93	575	37.6	D	1, 19	
		364T	EM7084T-I	⑤	9,526	SD	33.44	910	94.1	230/460	49.4	A	1, 19	
364T		M7084T-I	⑤	7,328	SD	33.25	889	93	230/460	49	D	1, 19		
50		3600	326TS	EM7081T-I	⑤	9,670	SD	30.50	724	93	230/460	56	A	1, 19
			326TS	M7081T-I	⑤	7,439	SD	30.50	705	92.4	230/460	56	D	1, 19
	1800	326T	EM7064T-I	⑤	9,919	SD	32.00	790	94.5	230/460	58	A	1, 19	
		326T	EM7064T-I-5	⑤	9,919	SD	32.00	790	94.5	575	46.4	A	1, 19	
		326T	M7064T-I	⑤	7,526	SD	32.00	798	93	230/460	60	D	1, 19	
		326T	M7064T-I-5	⑤	7,526	SD	32.00	795	93	575	47	D	1, 19	
		365T	EM7085T-I	⑤	10,751	SD	33.44	950	94.1	230/460	61.7	A	1, 19	
	365T	M7085T-I	⑤	8,270	SD	33.25	765	93	230/460	61	D	1, 19		

<sup>(a)</sup> See notes on inside back flap.

■ Cast Iron Frame

These motors expel condensation better than standard explosion proof designs. They are recommended for applications such as fuel transfer terminals and fuel truck loading facilities where motors may run intermittently, applications where explosion-proof motors are installed outdoors exposed to the environment, and may not be operated for extended periods of time. These explosion-proof motors are not suitable for use with adjustable speed drives. Inverter duty explosion-proof motors must be used. See page 232.

**Drill Rig Duty, Three Phase, 1.15 Service Factor**

Hp	RPM	NEMA Frame	Catalog Number	XP (a)	List Price	Mult. Sym.	"C" Dim.	Aprx. Wt. (lb)	Full Load Efficiency	Voltage	Full Load Amps	EISA Status (a)	Notes (a)	
60	3600	364TS	EM7310T-I	Ⓢ	10,386	SD	33.44	984	93.6	230/460	65.1	A	1, 19	
		364TS	M7310T-I	Ⓢ	8,593	SD	31.13	945	93	230/460	66	D	1, 19	
	1800	364T	EM7066T-I	Ⓢ	11,215	SD	33.44	965	95	230/460	68	A	1, 19	
		364T	EM7066T-I-5	Ⓢ	11,215	SD	33.44	965	95	575	91.6	A	1, 19	
		364T	M7066T-I	Ⓢ	8,537	SD	33.25	981	93.6	230/460	69	D	1, 19	
		364T	M7066T-I-5	Ⓢ	8,537	SD	33.25	979	93.6	575	56	D	1, 19	
		404T	EM7086T-I	Ⓢ	12,562	SD	38.31	1300	94.5	230/460	69	A	1, 19	
	404T	M7086T-I	Ⓢ	9,868	SD	38.75	1325	93.6	230/460	70	D	1, 19		
	75	3600	364TS	M7313T-I	Ⓢ	9,958	SD	31.13	985	93	230/460	83	D	1, 19
			365TS	EM7313T-I	Ⓢ	11,687	SD	33.44	964	93.6	230/460	80.7	A	1, 19
1800		365T	EM7068T-I	Ⓢ	11,675	SD	33.44	1065	95.4	230/460	86	A	1, 19	
		365T	EM7068T-I-5	Ⓢ	11,675	SD	33.44	1065	95.4	575	68.9	A	1, 19	
		365T	M7068T-I	Ⓢ	10,500	SD	33.25	1044	94.1	230/460	85	D	1, 19	
		365T	M7068T-I-5	Ⓢ	10,500	SD	33.25	1031	94.1	575	69	D	1, 19	
		405T	EM7087T-I	Ⓢ	14,352	SD	38.31	1335	94.5	230/460	86.9	A	1, 19	
405T		M7087T-I	Ⓢ	11,224	SD	38.75	1338	93.6	230/460	88	D	1, 19		
100		1800	405T	EM7090T-I	Ⓢ	14,973	SD	38.31	1335	95.4	230/460	112	A	1, 19
			405T	EM7090T-I-5	Ⓢ	14,973	SD	38.31	1335	95.4	575	90	A	1, 19
	405T		M7090T-I	Ⓢ	12,693	SD	38.75	1367	94.5	230/460	109	D	1, 19	
	405T		M7090T-I-5	Ⓢ	12,693	SD	38.75	1372	94.5	575	87	D	1, 19	

**C-Face, Foot Mounted**

1/2	1800	56C	CM7006-I	Ⓢ	827	SD	13.14	53	75.5	230/460	0.8	C	1, 19
3/4	1800	56C	CM7010-I	Ⓢ	843	SD	14.31	49	78.5	230/460	1.4	C	1, 19
1	1800	56C	CM7014-I	Ⓢ	899	SD	14.31	51	82.5	230/460	1.6	C	1, 19
1 1/2	1800	145TC	CEM7034T-I	Ⓢ	1,378	SD	16.10	59	86.5	230/460	0	A	1, 19
		145TC	CM7034T-I	Ⓢ	1,056	SD	15.23	58	84	230/460	2.4	D	1, 19
2	1800	145TC	CEM7037T-I	Ⓢ	1,461	SD	16.10	65	86.5	230/460	2.7	A	1, 19
		145TC	CM7037T-I	Ⓢ	1,140	SD	15.23	60	84	230/460	3.1	D	1, 19
3	1800	182TC	CEM7042T-I	Ⓢ	1,645	SD	20.36	85	89.5	230/460	4.2	A	1, 19
		182TC	CM7042T-I	Ⓢ	1,336	SD	19.59	111	87.5	230/460	4.1	D	1, 19
5	1800	184TC	CEM7044T-I	Ⓢ	1,989	SD	18.80	96	89.5	230/460	6.5	A	1, 19
		184TC	CM7044T-I	Ⓢ	1,607	SD	19.59	122	87.5	230/460	6.7	D	1, 19
7 1/2	1800	213TC	CEM7047T-I	Ⓢ	2,333	SD	20.36	175	91.7	230/460	9.4	A	1, 19
		213TC	CM7047T-I	Ⓢ	1,862	SD	21.07	177	89.5	230/460	10.2	D	1, 19
10	1800	215TC	CEM7170T-I	Ⓢ	2,838	SD	20.65	252	91.7	230/460	12.2	A	1, 19
		215TC	CM7170T-I	Ⓢ	2,202	SD	20.78	232	89.5	230/460	14.2	D	1, 19
15	1800	254TC	CEM7054T-I	Ⓢ	4,694	SD	26.00	380	92.4	230/460	18	A	1, 19
		254TC	CM7054T-I	Ⓢ	3,843	SD	26.00	333	91	230/460	18.2	D	1, 19
20	1800	256TC	CEM7056T-I	Ⓢ	5,564	SD	26.00	405	93	230/460	24	A	1, 19
		256TC	CM7056T-I	Ⓢ	4,464	SD	26.00	356	91	230/460	25	D	1, 19
25	1800	284TC	CEM7058T-I	Ⓢ	6,813	SD	28.61	555	93.6	230/460	30.5	A	1, 19
		284TC	CM7058T-I	Ⓢ	5,555	SD	28.61	554	92.4	230/460	30.8	D	1, 19
30	1800	286TC	CEM7060T-I	Ⓢ	7,907	SD	28.61	574	93.6	230/460	36	A	1, 19
		286TC	CM7060T-I	Ⓢ	6,279	SD	28.61	584	92.4	230/460	36	D	1, 19
40	1800	324TC	CEM7062T-I	Ⓢ	10,547	SD	32.00	775	94.1	230/460	48	A	1, 19
		324TC	CM7062T-I	Ⓢ	8,488	SD	32.00	808	93	230/460	47	D	1, 19
50	1800	326TC	CEM7064T-I	Ⓢ	11,993	SD	32.00	795	94.5	230/460	57	A	1, 19
		326TC	CM7064T-I	Ⓢ	9,600	SD	32.00	779	93	230/460	60	D	1, 19

(a) See notes on inside back flap.

■ Cast Iron Frame

These motors expel condensation better than standard explosion proof designs. They are recommended for applications such as fuel transfer terminals and fuel truck loading facilities where motors may run intermittently, applications where explosion-proof motors are installed outdoors exposed to the environment, and may not be operated for extended periods of time. These explosion-proof motors are not suitable for use with adjustable speed drives. Inverter duty explosion-proof motors must be used. See page 232.

General Information

Premium Efficient Super-E® Motors

Single Phase Motors

General Purpose Industrial Motors

Severe Duty Motors

Washdown Duty Motors

Explosion Proof Motors

Pump Motors

Light Industrial/Commercial Motors

HVAC Motors

**Drill Rig Duty, Three Phase, 1.15 Service Factor**

Hp	RPM	NEMA Frame	Catalog Number	XP <sup>(a)</sup> CIs/Grp	List Price	Mult. Sym.	"C" Dim.	Aprx. Wt. (lb)	Full Load Efficiency	Voltage	Full Load Amps	EISA Status <sup>(a)</sup>	Notes <sup>(a)</sup>
<b>C-Face, Footless</b>													
1/2	1800	56C	<b>VM7006-I</b>	⑤	756	SD	13.14	53	75.5	230/460	0.8	C	1, 19
3/4	1800	56C	<b>VM7010-I</b>	⑤	840	SD	14.31	49	78.5	230/460	1.4	C	1, 19
1	1800	56C	<b>VM7014-I</b>	⑤	882	SD	14.31	51	82.5	230/460	1.6	C	1, 19
		143TC	<b>VM7014T-I</b>	⑤	952	SD	15.23	50	82.5	230/460	1.6	B	1, 19
1 1/2	1800	56C	<b>VM7034-I</b>	⑤	950	SD	15.17	55	84	230/460	2.4	C	1, 19
		145TC	<b>VM7034T-I</b>	⑤	1,026	SD	15.23	58	84	230/460	2.4	B	1, 19
2	1800	145TC	<b>VM7037T-I</b>	⑤	1,110	SD	15.23	60	84	230/460	3.1	B	1, 19
3	1800	182TC	<b>VM7042T-I</b>	⑤	1,423	SD	19.91	109	87.5	230/460	4.1	B	1, 19
5	1800	184TC	<b>VM7044T-I</b>	⑤	1,733	SD	19.91	122	87.5	230/460	6.7	B	1, 19
7 1/2	1800	213TC	<b>VM7047T-I</b>	⑤	2,006	SD	21.06	165	89.5	230/460	10.2	B	1, 19
10	1800	215TC	<b>VM7170T-I</b>	⑤	2,433	SD	20.77	230	89.5	230/460	14.2	B	1, 19

<sup>(a)</sup> See notes on inside back flap.

■ Cast Iron Frame

These motors expel condensation better than standard explosion proof designs. They are recommended for applications such as fuel transfer terminals and fuel truck loading facilities where motors may run intermittently, applications where explosion-proof motors are installed outdoors exposed to the environment, and may not be operated for extended periods of time. These explosion-proof motors are not suitable for use with adjustable speed drives. Inverter duty explosion-proof motors must be used. See page 232.

**Drill Rig Duty, Single Phase, C-Face, 1.15 Service Factor, Foot Mounted**

**1/3 thru 1 Hp**

**NEMA 56C**

**Applications:** Pumps, blowers, valves and other applications in petro-chemical industry needing Severe Duty, Division I, Class I, Group C & D approval.

**Features:** Corrosion resistant finish, breather drain, labyrinth seal on output shaft. UL approved conduit box, 1.15 service factor, UL and CSA approved for Class I, Group C & D.



Hp	RPM	NEMA Frame	Catalog Number	XP <sup>(a)</sup> CIs/Grp	List Price	Mult. Sym.	"C" Dim.	Aprx. Wt. (lb)	Full Load Efficiency	Voltage	Full Load Amps	EISA Status <sup>(a)</sup>	Notes <sup>(a)</sup>
1/3	1800	56C	<b>CL5001-I</b>	⑤	803	K	14.31	46	55	115/208-230	3.3	C	
1/2	1800	56C	<b>CL5004-I</b>	⑤	804	K	14.31	52	64	115/208-230	4	C	
3/4	1800	56C	<b>CL5007-I</b>	⑤	858	K	15.17	61	68	115/230	5.3	C	
1	1800	56C	<b>CL5023-I</b>	⑤	925	K	16.05	62	68	115/230	6.5	C	

<sup>(a)</sup> See notes on inside back flap.

These motors expel condensation better than standard explosion proof designs. They are recommended for applications such as fuel transfer terminals and fuel truck loading facilities where motors may run intermittently, applications where explosion-proof motors are installed outdoors exposed to the environment, and may not be operated for extended periods of time. These explosion-proof motors are not suitable for use with adjustable speed drives. Inverter duty explosion-proof motors must be used. See page 232.

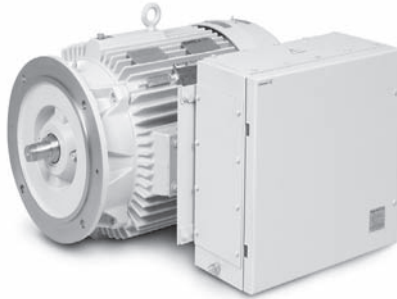
**ATEX Directive  
94/9/EC**



**1 thru 500 Hp  
.75 thru 373 kW**



**NEMA 180T thru 449T  
IEC 112M thru 280H**



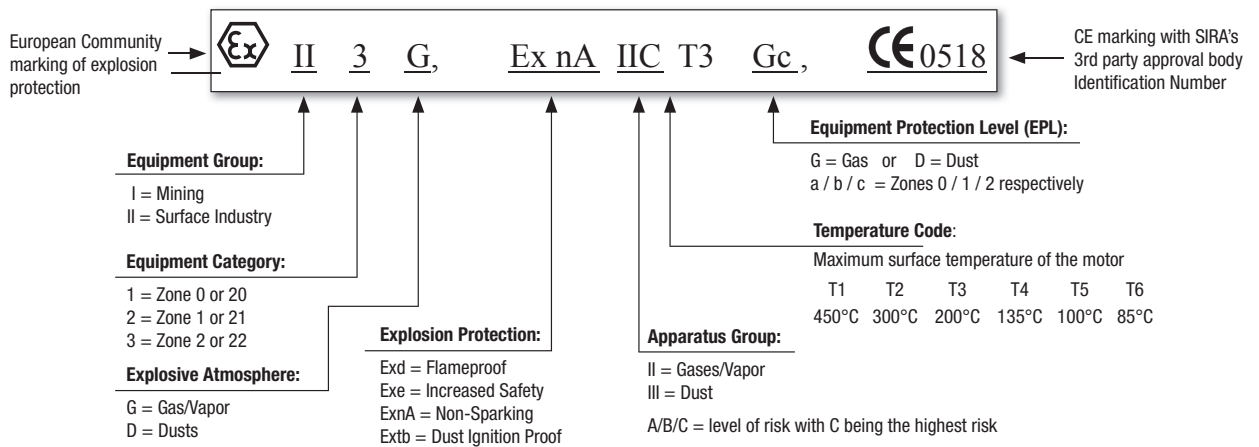
Dual Protection ATEX Motor with Increased Safety conduit box, 360T Frame, flange mounted.

**Applications:** Baldor offers a wide variety of Custom Explosion Proof motors for use outside the US market where other than UL certification is required. Baldor's ATEX motor certification capabilities meet the Atmospheric Explosive directive (ATEX 94/9/EC) required on all equipment used in hazardous locations within the European market. Baldor uses SIRA as our 3rd party approval body for ATEX certification. Baldor ATEX motors also carry the IECEx certification to satisfy the broader international market.

**Features:** Rugged Cast Iron frame, endplates, conduit box and fan cover, Super-E NEMA Premium® designs (IEC 60034-30 IE3), 1.15 Service Factor, Usable on Sine wave and Inverter power, CE compliant.

**ATEX APPROVED MOTORS**

It is important to have a good understanding of ATEX terminology to be able to determine which Baldor ATEX certified motor is right for your application. This terminology is different from those used by UL and should not be mixed with UL terms in specifications or quotes. Specific ATEX markings are required to certify that a motor may be used in specific potentially explosive environment. Typical ATEX markings include:



**BALDOR ATEX CAPABILITIES MATRIX - Group II (Surface Industry Applications)**

Environment	Explosion Protection	Max. HP (kW)	Frame NEMA (IEC)	Max. Voltage	Apparatus Group	Temp Code	Ambient Temp. (°C)
Explosive Gas Environments (G)	Exd (Flameproof) Zone 1	500HP (373kW)	180T – 449T (112M-280M)	1,000 volts	IIA & IIB	T3, T4 & T5	-20 to +40 (+65 Max)
	ExnA (Non-Sparking) Zone 2	450HP (335kW)	180T – 4412T (112M-280H)	2,300 volts	IIA, IIB & IIC	T2, T3 & T4	-20 to +40 (-30 Min)
Explosive Dust Environments (D)	Extd (Dust Ignition Proof) Zone 21	500HP (373kW)	180T – 449T (112M-280M)	1,000 volts	IIIA, IIIB & IIIC	T3, T4 & T5	-20 to +40 (+65 Max)
	Baldor motors marked "Extb" for Zone 21 may be additionally labeled "suitable for Zone 22 (EPL Dc)"						
Dual Protection Gas & Dust Environments (G/D)	Baldor ATEX motors can be dual labeled for "Exd" (Flameproof) and "Extd" (Dust Ignition Proof), Zones 1, 21 to meet the most hazardous explosive atmosphere applications.						
Increased Safety	"Exd" motors can be supplied with an Increased Safety conduit box separately labeled "Exe"						

Baldor takes pride in tailoring our custom motors to fit our customer's specific requirements. For a full range of available options, pricing and availability contact your local Baldor Sales Representative.

Phone: 800.894.0412 - Fax: 888.723.4773 - Web: www.clrwtr.com - Email: info@clrwtr.com

General Information

Premium Efficient Super-E® Motors

Single Phase Motors

General Purpose Industrial Motors

Severe Duty Motors

Washdown Duty Motors

Explosion Proof Motors

Pump Motors

Light Industrial/Commercial Motors

HVAC Motors